



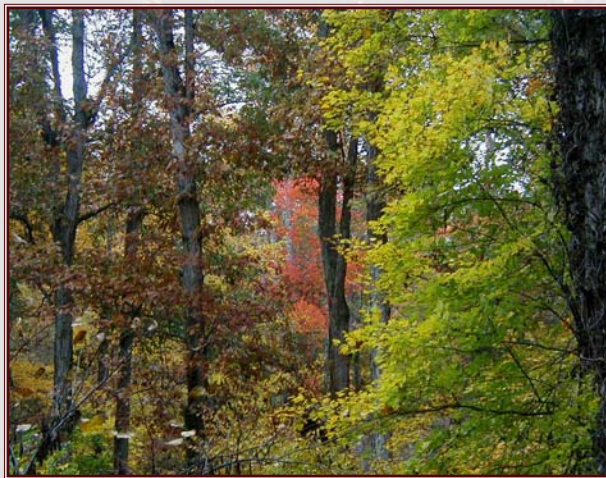
Welcome to the  
Kings Mill &  
Morgan Creek  
Neighborhood

Located in Chapel Hill, NC

# Welcome to the Neighborhood!

**The KingsMill- MorganCreek Neighborhood is located in Chapel Hill, North Carolina, home of the University of North Carolina at Chapel Hill.**

Our area spreads across rolling forest and is interrupted only by rocks, creeks, and wildlife. Most of the homes are architect designed with special consideration for the environment of the area. We have no privacy fences, no sidewalks, and very few straight streets. The neighborhood seems to



flow over the land and continue into the Botanical Garden pathways, the banks of Morgan Creek, and the sudden opening of the meadow.

The Dean E. Smith Center, Kenan Stadium, the UNC medical campus and UNC Hospitals are within walking distance, and many neighbors bicycle to the main campus and downtown Chapel Hill.

The neighborhood was built in the 1950s and 60s and has a colorful history. At any time, but especially in the early mornings and evenings, you will find neighbors jogging, walking dogs, and gathering to talk. We not only bring together doctors, lawyers, scientists, business persons, engineers and other professionals and scholars, but also artists, writers, musicians, linguists and philosophers. In times of need, such as Hurricane Fran, we have banded together to support each other.

This is indeed a special place to live.



## Booklet Contents

We, your new neighbors, want you to enjoy living here as much as we do. Included in this packet is information on:

- ☞ Our neighborhood association
- ☞ Area maps
- ☞ The Town of Chapel Hill
- ☞ The University of North Carolina
- ☞ The NC Botanical Garden
- ☞ The Morgan Creek Alliance
- ☞ Local schools
- ☞ Local utilities
- ☞ Helpful neighbors
- ☞ Neighborhood IT
- ☞ Our history

### The KingsMill - MorganCreek Neighborhood Association

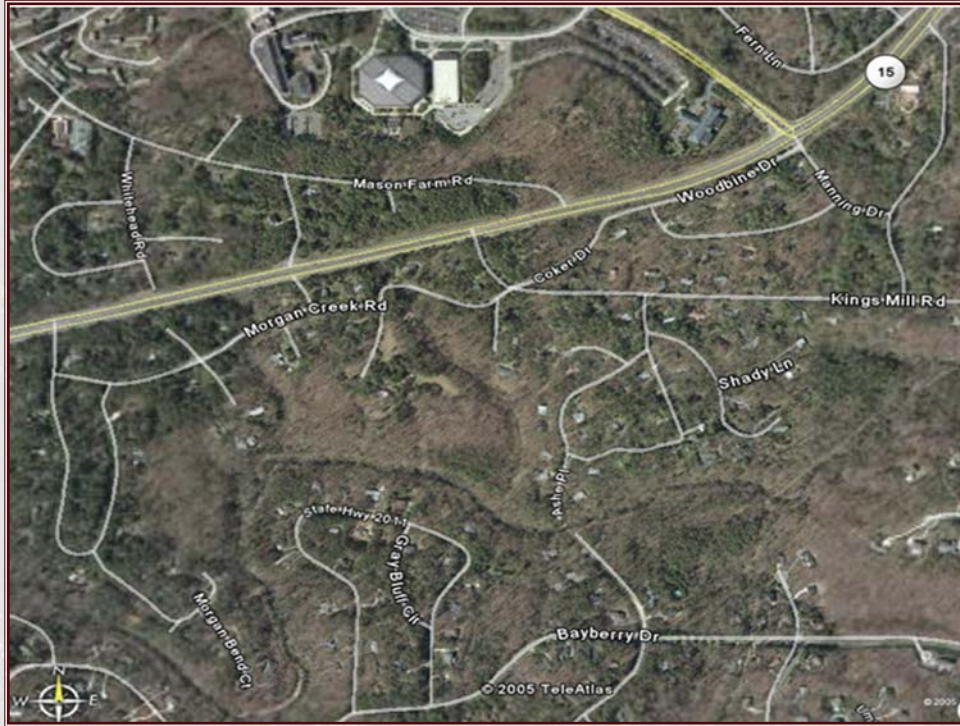
The association is dedicated to maintaining the character of our neighborhood and to representing our interests on issues that affect us.

The Association holds an annual meeting, usually in January. Smaller meetings are held as needed at the Totten Center, NC Botanical Gardens. The Association Board members are elected to two-year terms. Minutes of the meetings are available on request. The Association Newsletter is published a few times per year and widely distributed. All neighbors are welcome to attend meetings.

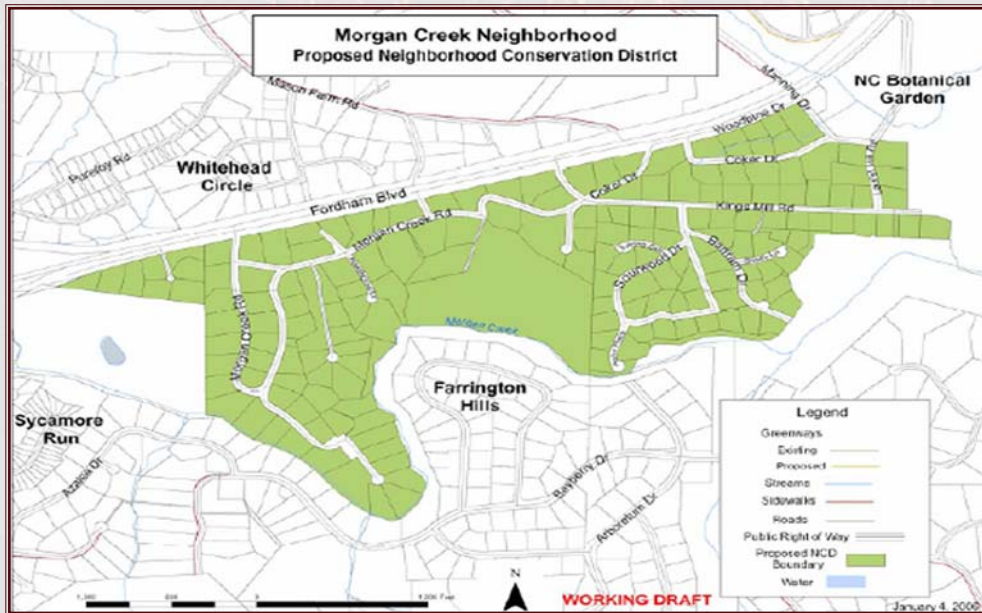


# Local Maps

This is a GoogleEarth view of our neighborhood in winter:

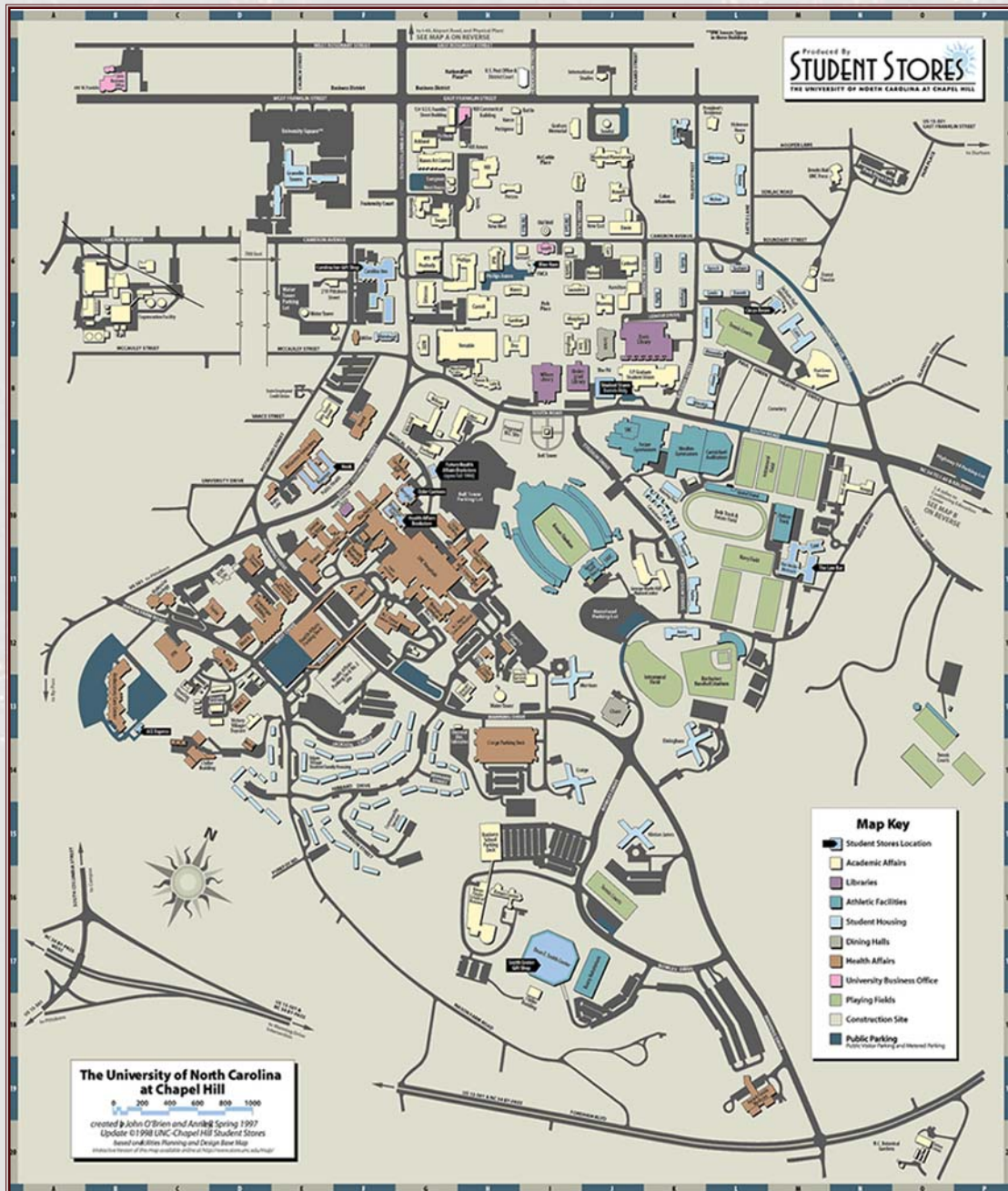


Here is a working map used for developing a Neighborhood Conservation District (NCD) (See Taking Care of our Neighborhood):



## Local Maps (continued)

The campus map shown here was printed from the website [www.unc.edu/tour/LEVEL\\_2/campusmap.htm](http://www.unc.edu/tour/LEVEL_2/campusmap.htm). The site includes a virtual tour of the campus. A similar map appears as a cardboard foldout in the Chapel Hill BellSouth telephone directory. A complete directory of buildings appears on the reverse side.



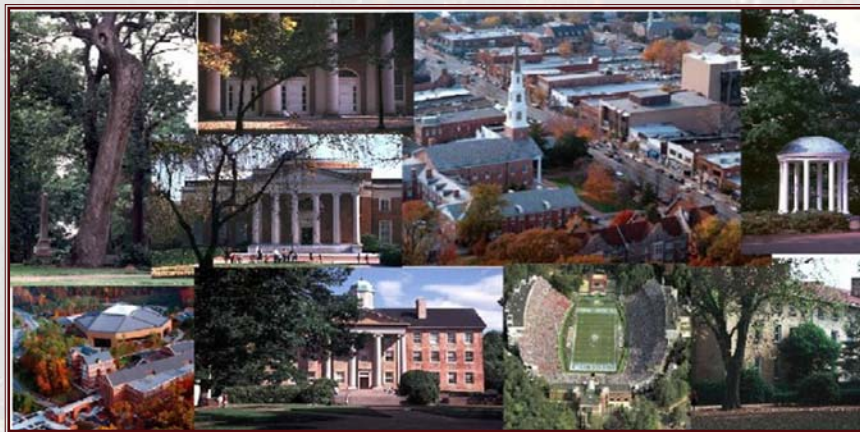
## Town of Chapel Hill

The Town of Chapel Hill Town Hall  
405 Martin Luther King Jr. Blvd.  
Chapel Hill, NC 27514

Town Hall Hours:  
Monday - Friday 8:30 a.m. - 5:00 p.m.

The Town's excellent website provides a variety of links to Town regulations, staff, services, library and transportation.

Visit their website at: [www.townofchapelhill.org](http://www.townofchapelhill.org)



## The University of North Carolina at Chapel Hill

The University of North Carolina at Chapel Hill has been a major influence in shaping our neighborhood. The University is a world renowned educational center. In 1795, it was the first public university in the nation to open its doors to students. While the professional schools attract high ratings for excellence, the undergraduate body includes many North Carolinians who are the first in their families to attend college. The University has a stellar sports record and is usually is in competition for the Sears Cup, an award for the nation's finest record in all athletics. The name, "Tar Heels," is known world-wide.

Visit their website at: [www.unc.edu](http://www.unc.edu).



## North Carolina Botanical Garden

The NC Botanical Garden is a major neighbor. Their personnel participate in our meetings, ask our opinions about their development plans, and volunteer to lend their considerable political weight to our interests as much as possible. Their facility is beautiful, comprehensive, informative and a major research center as well.

We look to the Garden for counsel in maintaining the natural beauty of the neighborhood by discouraging invasive exotic plants, telling us what plants deer hate, and other advice.

### Mailing Address:

The University of North Carolina at  
Chapel Hill, CB 3375  
Chapel Hill, NC 27599  
(919) 962-0522  
[www.ncbg.unc.edu](http://www.ncbg.unc.edu)

### Operating hours:

Monday through Friday: 8:00am-5:00 pm  
Saturday: 9:00 am - 5:00 pm  
Sunday: 1:00 pm - 5:00 pm

The Curator is on-call weekdays from noon until 1:00 pm; or call (919) 962-0522.  
Visit the Garden's website at [www.ncdg.unc.edu](http://www.ncdg.unc.edu)



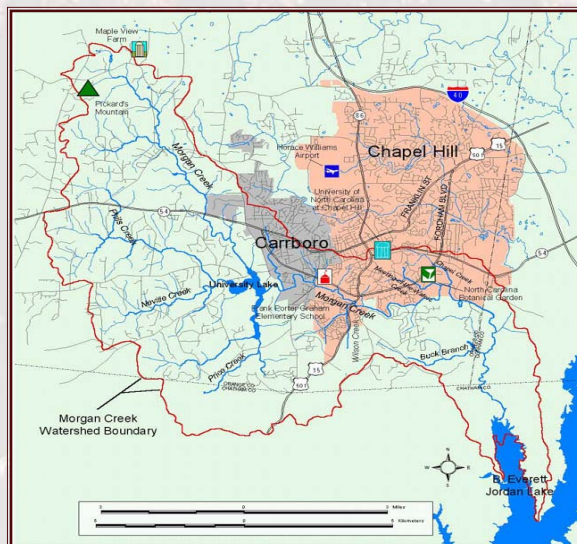
## Morgan Creek Valley Alliance

Johnny Randall of the North Carolina Botanical Garden heads up the Morgan Creek Valley Alliance, a comprehensive conservation group.

### Mailing Address:

Johnny Randall, Assistant Director for  
Conservation  
The North Carolina Botanical Garden  
The University of North Carolina at  
Chapel Hill  
Campus Box #3375, Totten Center  
Chapel Hill, NC 27599

Visit their website at:  
[www.morgancreek.org](http://www.morgancreek.org)



## Local Schools

### Chapel Hill-Carrboro Public Schools

#### **Glenwood Elementary School**

2 Prestwick Road  
Chapel Hill, NC 27517  
968-3473  
Principal: Darlene Ryan

#### **Grey Culbreth Middle School**

225 Culbreth Road  
Chapel Hill, NC 27516  
(919) 929-7161  
Principal: Susan Wells

#### **East Chapel Hill High School**

500 Weaver Dairy Road  
Chapel Hill, NC 27514  
(919) 969-2482  
Principal: Eileen Tully

#### **Carrboro High School**

201 Rock Haven Road  
Carrboro, NC 27510  
(919) 918-2200  
Principal: Colin K. Batten, Jr.



### Private schools

#### **Saint Thomas More Catholic School**

920 Carmichael Street  
Chapel Hill, NC 27514  
919.929.1546 - lower school  
919.929.2241 - upper school  
[www.st-thomasmore.org/School/](http://www.st-thomasmore.org/School/)

#### **Carolina Friends School**

4809 Friends School Road  
Durham, NC 27705-8193  
Telephone: 386.6602  
Website: [www.cfsnc.org](http://www.cfsnc.org)

#### **The Emerson Waldorf School**

6211 New Jericho Road  
Chapel Hill, North Carolina 27516  
Website: [www.emersonwaldorf.org](http://www.emersonwaldorf.org)  
Telephone: 967.1858  
High School: 932.1195  
Office Hours: 8 a.m. - 5 p.m., weekdays

#### **Durham Academy**

Website: [www.da.org](http://www.da.org)  
Upper school:  
3601 Ridge Road  
Durham, NC 27705-5599  
Telephone: 493-9595  
Voice mail: 489-6569

#### Middle school

3116 Academy Road  
Durham, NC 27707-2699  
Telephone: 493.6181  
Voice mail: 489.9118

#### Lower and Preschools, Admissions

3501 Ridge Road  
Durham, NC 27705-5539  
Telephone: 493-5786  
Voice mail: 489-3499

## Preschools / Private and Charter Schools

The Chapel Hill/Carrboro Mothers Club maintains a list on line of 46 preschools. Each listing includes application fee, school starts, hours, class size, student:teacher ratio, boy/girl quota, required toilet-training, parental participation required, special features and philosophy, and web address.

Their web address is: [www.chapelhillmothersclub.org/preschool/preschools.htm](http://www.chapelhillmothersclub.org/preschool/preschools.htm)

## Other Local Preschool/Private/Charter Schools

### **Advent Lutheran Church**

230 Erwin Rd, Chapel Hill, NC  
(919) 968-7690 [adventlutheranch.org](http://adventlutheranch.org)

### **Artgarden Montessori Children's House (Ballet School of Chapel Hill)**

1603 E Franklin St, Chapel Hill, NC  
(919) 942-1339

### **Camelot Academy, K-12**

809 Proctor Street, Durham, NC 27707,  
(919) 688-3040 [www.camelotacademy.org](http://www.camelotacademy.org)

### **Cary Academy, 6-12**

1500 N. Harrison Ave., Cary, NC 27513-5549  
(919) 677-3873 [www.caryacademy.org](http://www.caryacademy.org)

### **Chapel Hill Day Care Center**

401 Kildaire Rd, Chapel Hill, NC  
(919) 929-3585

### **Chesterbrook Academy**

117 Woodcroft Pkwy, Durham, NC 27713  
(919) 489-8899  
[www.chesterbrook-academy.com](http://www.chesterbrook-academy.com)

### **Mundo Pequeo Early Childhood Bilingual School, Chapel Hill, NC**

(919) 967-0558 [mundopequeno.org/](http://mundopequeno.org/)

### **Triangle Day School, K-8**

4911 Neal Road, Durham, NC 27705  
(919) 383-8800 [www.triangledayschool.org](http://www.triangledayschool.org)

### **Trinity Episcopal School, K-9**

4011 Pickett Road, Durham, NC 27705  
(919) 402-8262 [www.trinityschoolnc.org](http://www.trinityschoolnc.org)

### **Montessori Community School**

4512 Ope Road, Durham, NC  
(919) 493-8541 [www.mcsdurham.com](http://www.mcsdurham.com)

### **Woods Charter School, Grades 3-12**

208 Cole Park Plaza, Chapel Hill, NC 27517  
(919) 960-8353 [www.woodscharter.org](http://www.woodscharter.org)

### **Other Charter schools:**

See League of Women Voter's Link:  
<http://odc.nc.lwvnet.org/charterschools.html>



## Local Utilities



### **Orange Water and Sewer Authority (OWASA)**

Street address: 400 Jones Ferry Road  
Carrboro, NC 27510

Webpage: [www.owasa.com](http://www.owasa.com)

Telephone: 919.968.4421

Not all homes are linked to the OWASA sewer system.  
Some retain septic tanks.



### **Duke Power Company**

Street address: 526 South Church Street  
Charlotte, NC 28202

Mail payments : P.O. Box 70516  
Charlotte, NC 28272-0516

Correspondence: P. O. Box 1090  
Charlotte, NC 28201-1090

Webpage: [www.dukepower.com](http://www.dukepower.com)

email: [us@duke-energy.com](mailto:us@duke-energy.com)

24-hour customer service: 919.967.8231



### **Public Service Corporation (PSNC Energy): natural gas**

Mailing address: P. O. Box 100256  
Columbia, SC 29202

Street address: 1426 Main Street  
Columbia, SC 29202

Telephone: 877.776.2427

Website: [www.scana.com/PSNC%20Energy/default.htm](http://www.scana.com/PSNC%20Energy/default.htm)



### **Time-Warner Cable, TV, high speed internet, telephone**

Customer Care Center: 1201B Raleigh Road (Glen Lennox Shop Ctr)  
Chapel Hill, NC 27414

Mon - Fri 8 am - 6 pm; Sat 9 am - 1 pm

Telephone: 919.595.4892

Webpage: [www.timewarnercable.com](http://www.timewarnercable.com)



### **Bell South**

Ordering, billing,  
and other services: 888.757.6500

Repair: 888.737.2478

Website: [www.bellsouth.com](http://www.bellsouth.com)

### **telephone company and DSL provider**



## The Helping Hands List

The List contains the names of neighbors who are willing to help others in urgent situations, by:

- ☞ Helping remove storm debris
- ☞ Providing cooked food
- ☞ Providing transportation
- ☞ Running errands
- ☞ Baby sitting during an emergency
- ☞ Translating for foreign language
- ☞ Offering overnight accommodations
- ☞ Other specialties

## The Bird Count

The bird count is a service to the New Hope Audubon Society and is usually performed twice a year.

## The Neighborhood Watch

In conjunction with the Chapel Hill police, we participate in a watch to reduce the incidence of crime by:

- ☞ Increasing citizen awareness of burglary and other residential crimes
- ☞ Training citizens to better secure their property (Security Surveys and Operation Identification)
- ☞ Encouraging neighbors to report suspicious persons and activities
- ☞ Improving communication between residents and the Police Department

The liaison police officer assigned to our neighborhood:

Robin Clark  
Community Services Division  
Chapel Hill Police Department  
Telephone: 932-2929  
E-Mail: [rclark@townofchapelhill.org](mailto:rclark@townofchapelhill.org)

## The Recommended Home Services List

This list is not recommended by the Association, but by neighbors themselves. It includes contact information for the service provider, the name of the neighbor who made the recommendation and helpful comments on the quality of service.

## Other Activities

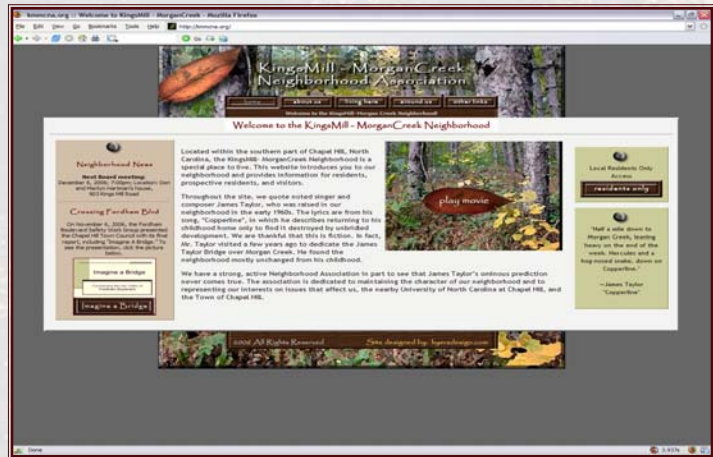
We have had "Meet the Candidate" forums, holiday cookie exchanges, food bank drives, winter coat collections, and other projects. The listserv is the best place to be notified of new activities.

## KingsMill - Morgan Creek Neighborhood Website

The Neighborhood Association maintains a website at

**kmmcna.org**

On the site, you can find timely neighborhood news, access to the “Residents Only” section, and all of the information contained within this booklet. You can also download and print a .pdf version of this booklet.



## Neighborhood ListServ

A ListServ is maintained at: <http://lists.ibiblio.org/mailman/listinfo/morgancreek>. In the past, neighbors have used the ListServ to seek advice, announce events, raise issues of concern, and direct attention to their concerns.

## Neighborhood Technology Providers

Fiber-optic cable runs throughout the neighborhood, providing high speed internet capability. Cable connections can be obtained through Time Warner. DSL is also widely used. Some neighbors use Earthlink with cable or DSL.

Cell phone coverage is not consistent, but is improving all the time. Phones with newer technology can usually reach their providers from inside the house, while others require going outside.

# Taking Care of our Neighborhood

## The Neighborhood Conservations District (NCD)

During 2005, our neighborhood began a process with the Town that resulted in a zoning overlay to protect the natural beauty and character of the neighborhood. We are now a Neighborhood Conservation District (NCD) as recommended by the Town



Planning Board and enacted by the Town Council. The process was not always easy as we worked to prevent exploitation of the neighborhood while at the same time protecting the rights and freedom of owners.

Some things the NCD covers are:

- ☞ preventing further subdivision of lots
- ☞ maintaining a minimum lot size
- ☞ establishing minimum setbacks

## The Covenants

Defense against NCD violations are the responsibility of the Town. Therefore, we attempted to codify some of our existing covenants into the NCD legal requirements. The NCD, however, cannot cover everything we would like to protect in our neighborhood. For further protection, the neighborhood relies upon its nine separate sets of covenants. Covenant disputes must be resolved by the neighbors, and sometimes this means having to file a law suit to defend them.

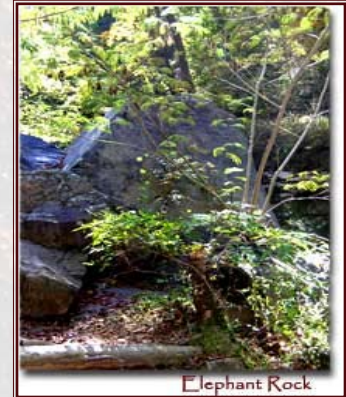
Only one covenant set has been updated in the Morgan Creek end of the neighborhood including Morgan Bend. Most of the remaining sets can be amended on each tenth anniversary of their creation. It is possible that the NCD process inspired some areas of the neighborhood to begin work on amending their covenants.



# The History of our Neighborhood

## A Useless Place.

The history of our neighborhood is a story of preservation, but not just by people who have loved it. While flatter, more fertile land all around us was farmed and parts of the slate belt that underlie our land was mined, the thinly covered rocks and steep gullies that give our neighborhood its dramatic beauty also made it useless for farming or mining. Not even the Indians of 5,000 years ago chose to stay camped here for more than a season at a time. Large crude stemmed spearpoints and tiny, lethal arrow points that needed the superior slate and flint of the creek bed have been found near the creek, but no pottery from permanent villages.



Elephant Rock

## The Morgan/Mason Farm.

Mark Morgan's famous farm, begun in the 1740s, became a plantation that stretched onto what is now Finley golf course. Like nine of his fellow Carolinians, he was proud to contribute land for building UNC. The Reverend James Mason married Mary Morgan, and looked forward to a life of God, family, and farm. When his two remaining daughters died in their twenties, the couple wrote a will leaving all 800 acres to UNC. A century later, the bequest became the Mason Farm Biological Reserve. But the families who dominate the names in our neighborhood lived near the golf course, and our neighborhood was never the center of their prosperity.

## The Kings Mill.

The waters of Morgan Creek did support a mill whose old chimney and small building foundation remain. The mill stone was discovered by a neighbor and now serves as an entry to the herb garden at the BOT. The miller's family, Baxter and Jeanette King built their house in 1880 and later sold it to Henderson and Cornelia Oldham, a well-respected black couple with six children. The house was abandoned for 14 years while Mr. Oldham's will was being executed. During this time it burned to the ground, and historians assume that UNC students torched it "for sport."



Kings Mill Stone

## At Last, a Purpose.

Our neighborhood's difficult terrain was perfect for one business: distilleries from 1920-1933. Unlike moonshiners in the mountains, our neighborhood "blockers" (from "blockade") were respectable businessmen and usually teetotalers. They bought their meal wholesale and built 150-gallon stills with \$300 worth of parts and could make a profit of \$1,100 in five days. They were usually tipped off if federal agents were about to raid, and they declined to fight for something they could rebuild in less than a week. If caught, they could count on a sympathetic jury and a light sentence.


## Billy Hunt's Extensive Legacy.

In the 1930s, William Lanier Hunt fell in love with "a pile of rocks" and the ancient Rhododendrons that were being stolen by the townspeople.

*This is a work in progress and will be continued...*



When they were new



Thank you to  
Vallyre Hyers of  
[hyersdesign.com](http://hyersdesign.com)  
for her design of  
this booklet

*Vallyre Hyers*